

# Venue Hire

GOLDEN  
THREAD  
**GALLERY**



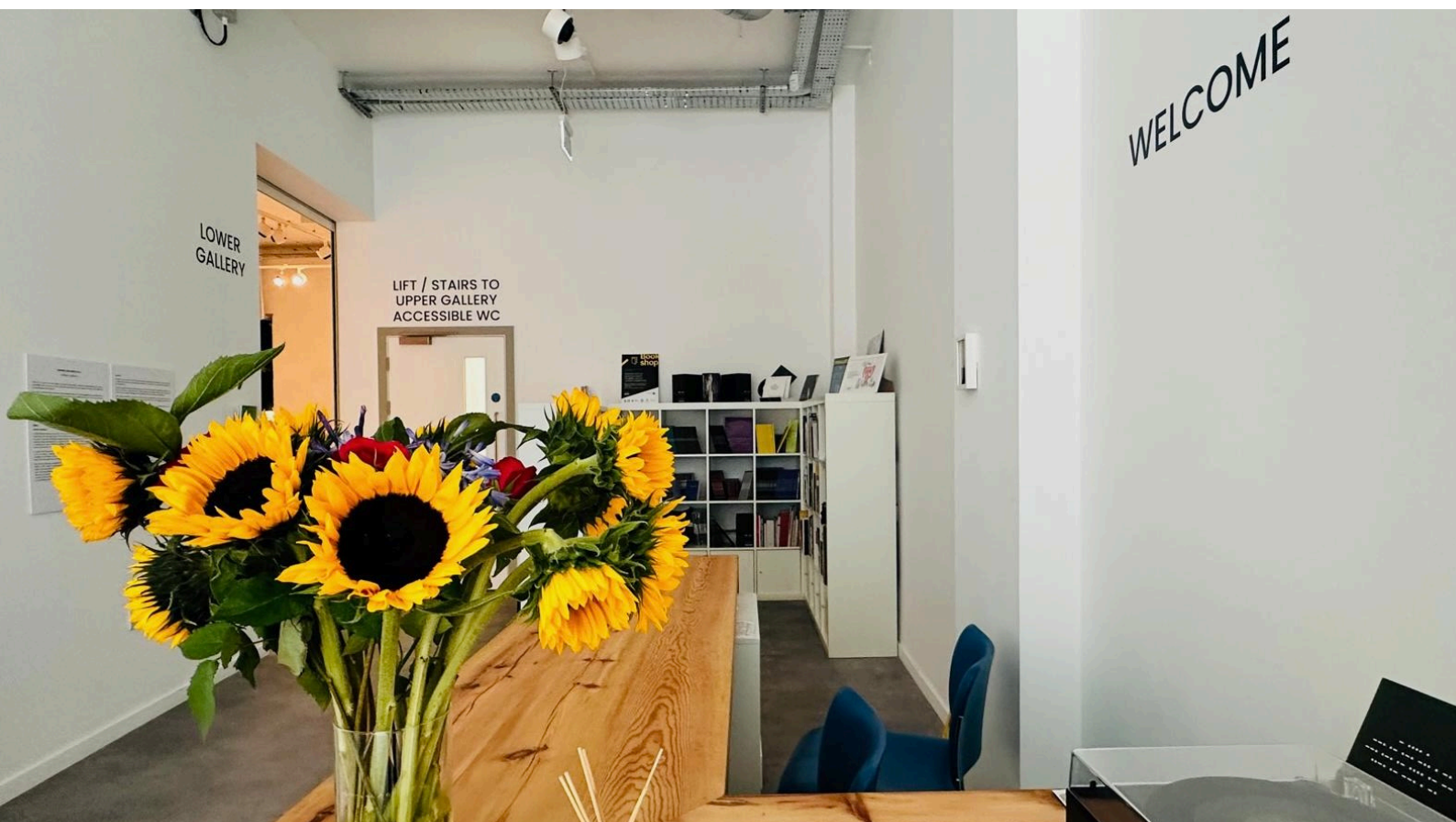
GOLDEN  
THREAD  
**GALLERY**

2025/26

# A unique venue in the heart of Belfast.

Golden Thread Gallery is a contemporary visual art gallery with a mission to engage, inspire, and educate audiences about visual art. The former Gas Corporation Showroom and Craftworld building at 23–29 Queen Street, Belfast, has been renovated and restored to bespoke specifications to become the gallery's new city-centre home. Set across two floors, our new venue includes 2 large galleries, a projection room, a Community Participation & Engagement Hub, and Northern Ireland's first visual art library & archive. Our building is an iconic showcase of this city's proud architectural heritage, and its thriving contemporary spirit.

Our space is available to hire for corporate events, product launches, seminars, conferences, filming and photography, weddings and parties. The venue is accessible and can comfortably accommodate up to 200 guests. As a registered charity, income from venue hire supports our work in the visual arts. We know that every event is special, so the rates below are indicative. Additional staffing costs may apply for events outside hours. We'll work with you to ensure your event is a success!



# History of the building

Our new home at 23–29 Queen Street has a rich heritage. Originally designed in 1871 by architect William Hastings, the building was remodeled in the 1930s, and operated as the Corporation GAS showroom.

In 1976 the Craftworld store was established in the building and was a favourite shopping destination for artists and makers for the next 30 years. It closed in 2020, and the building remained vacant for some time.

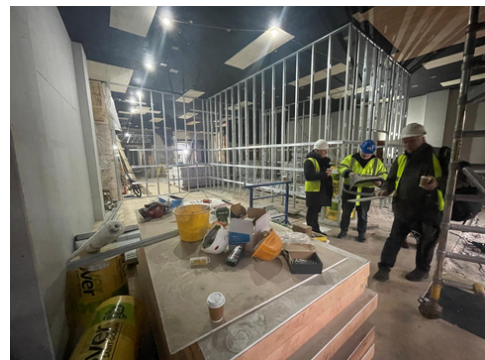
In 2022, owner Daren Millar of LEJA Properties sought to renovate and restore the building sympathetically to reveal many of its original features. Architect John FitzGerald of Dickson FitzGerald was commissioned to lead the restoration project. His team worked to create a modern bespoke premises which retained and highlighted elements of the old building, including the beautiful facade Art Deco Elevation, interior brickwork, and the original parquet flooring in the Upper Gallery.

Queen Street itself has a history of being a home to art and design, from important printers and stationers' firms such as John Dickinson & Sons and Robert Carswell & Sons in the 1800s, Craftworld and Bradbury Graphics in the 1970s and 80s, to Platform Arts Studios and Queen Street Studios in the 1990s.

Golden Thread Gallery is proud to be part of the next chapter in the story of this building, and of Queen Street itself.



Building facade 1930s. Photo courtesy of Archiseek.



Restoration and remodeling underway, 2023



Lord Mayor Micky Murray and GTG Directors Sarah McAvera & Peter Richards formally open the Gallery, August 2023.



# Upper Gallery

**Our stunning first floor exhibition space includes the original 1930's parquet floor and heritage windows, with high ceilings and natural light.**

**Capacities:** Standing 155 / Theatre 120 / Cabaret 90 / Classroom 80

**Dimensions:** 108sq. m - Length 11.7m Width 11.4m approx.\*

**Accessibility:** Lift access from ground floor

**Rates:**

Half-day 9am-1pm or 1.30-5pm from £300

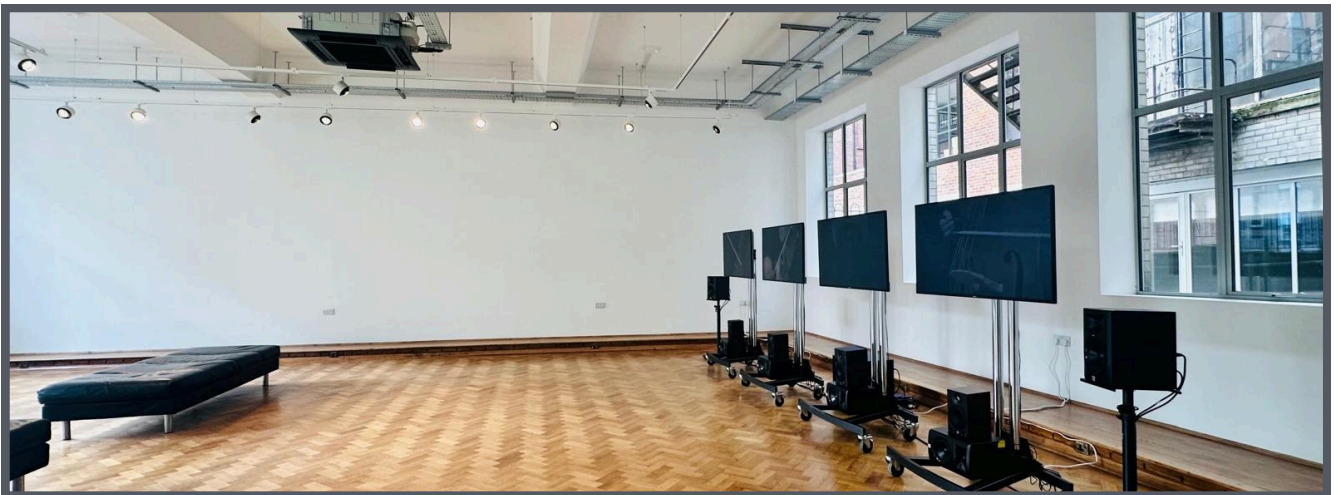
Full day 9am-5pm from £700

Evening 6-9pm from £900

Late evening 7-11pm from £1100

**Rate Includes:** Room Hire, Wi-Fi, 6 x Folding Tables, 42 x folding chairs, Coat rack

# Upper Gallery





# Lower Gallery

**Our ground floor white cube exhibition space, the smaller of our two galleries. Just off reception, it opens onto our Projection Room, where we show video & film work.**

**Capacities:** Standing 90 / Theatre 55 / Cabaret 40 / Classroom 35

**Dimensions:** 46sq. m - Length 11.7m Width 11.4m approx.\*

**Accessibility:** Ramp access from entrance, level access ground floor. Close to accessible WC.

**Rates:**

Half-day 9am-1pm or 1.30-5pm from £120

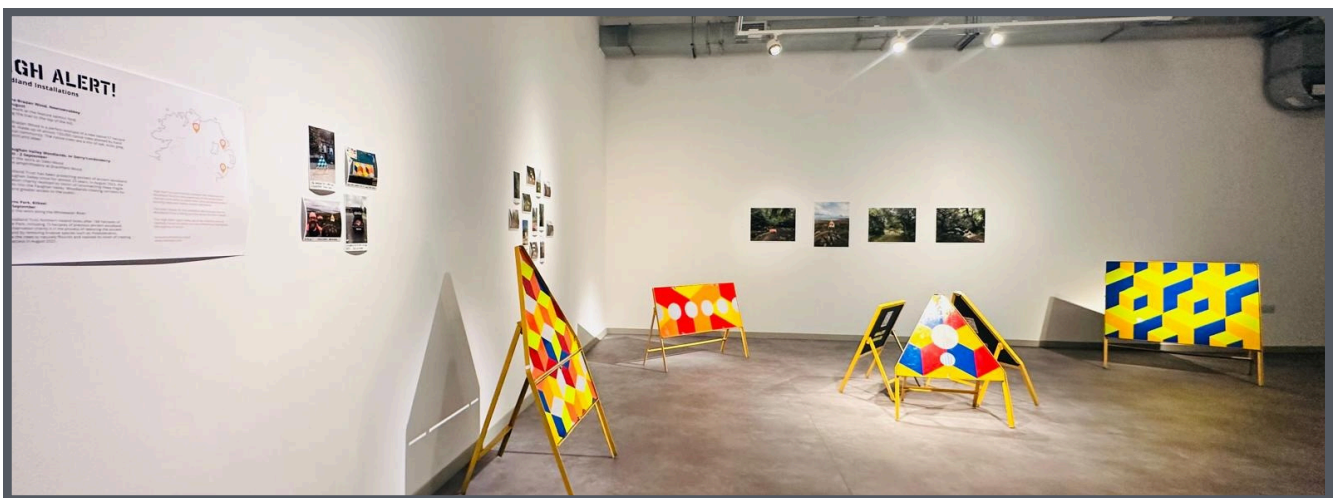
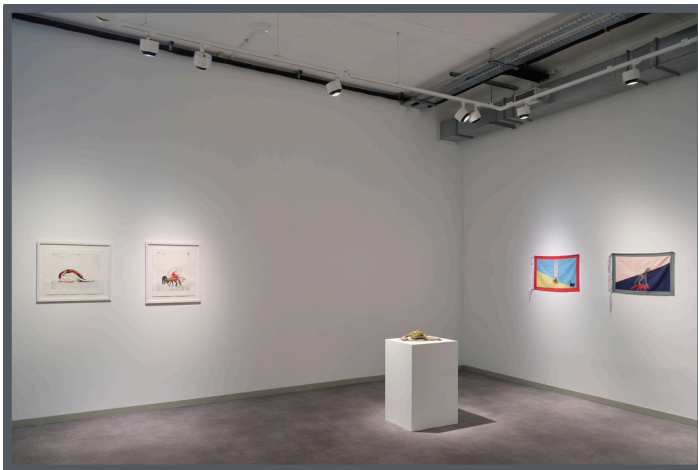
Full day 9am-5pm from £400

Evening 6-9pm from £600

Late evening 7-11pm from £800

**Rate Includes:** Room Hire, Wi-Fi, 6 x Folding Tables, 42 x folding chairs, Coat rack

# Lower Gallery





# Projection Room

**Our Projection Room can be booked for small group screenings or presentations, or included in Lower Gallery bookings as a serving / staging / DJ area.**

**Capacities:** Standing 40 / Theatre 24

**Dimensions:** 24.5sq. m - Length 7.9m Width 3m approx.\*

**Accessibility:** Ramp access from entrance, level access ground floor. Close to accessible WC.

**Rates for use as projection / presentation space:**

Half-day 9am-1pm or 1.30-5pm from £120

Full day 9am-5pm from £350

Evening 6-9pm from £500

Late evening 7-11pm from £600

**Rate Includes:** Use of projector & speaker, Wi-Fi, folding chairs, coat rack\*\*



# The Hub

**Our Community Participation & Engagement Hub at the front of the building has a large wall-mounted TV and is available for meetings, workshops or presentations.**

**Capacities:** Standing 60 / Classroom 28/ Theatre 42

**Dimensions:** 39sq. m - Length 6.5m Width 6m approx.\*

**Accessibility:** Ramp access from entrance, level access ground floor. Close to accessible WC.

**Rates:**

Half-day 9am-1pm or 1.30-5pm from £100

Full day 9am-5pm from £300

Evening 6-9pm from £500

Late evening 7-11pm from £600

**Rate Includes:** Use of monitor, Wi-Fi, chairs & tables.



# Accessibility

**Detailed accessibility info is on our website. We want to be a welcoming place for everyone, so if you have specific needs not mentioned here, please let us know.**

GTG is not situated on a road which has a steep gradient. Blue badge holders can drop off directly in front of the gallery, just before the bus stop.

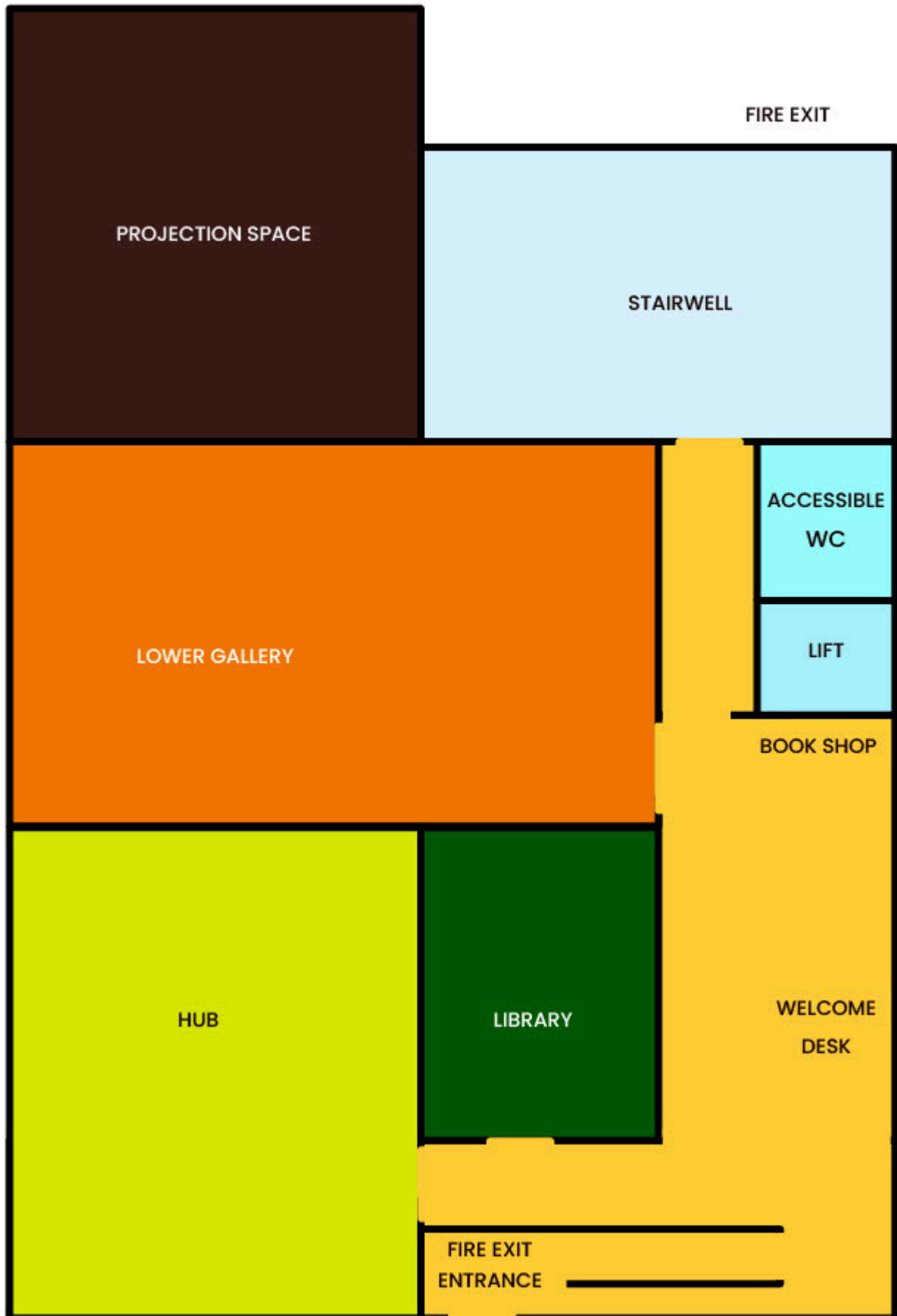
There is level access into the venue. The main door opens away from you (push). The door is single width. The door is heavy. The door opening is 95cm (3ft 1in) wide. There is a ramp with handrails on entry to access the gallery. There is a level landing at the top of the ramp.

The reception desk is low. We have a portable loop hearing assistance system. There is level access to the service(s) on the ground floor, and step-free wheelchair access to the upper floor via lift.

We have accessible toilet facilities on the ground floor, approximately 12m from the main entrance, located after reception. There is level access to this toilet. The door opens outwards and is locked by a locking handle. The emergency pull cord alarm is fully functional. Disposal facilities are available. Wall-mounted grab rails are available.

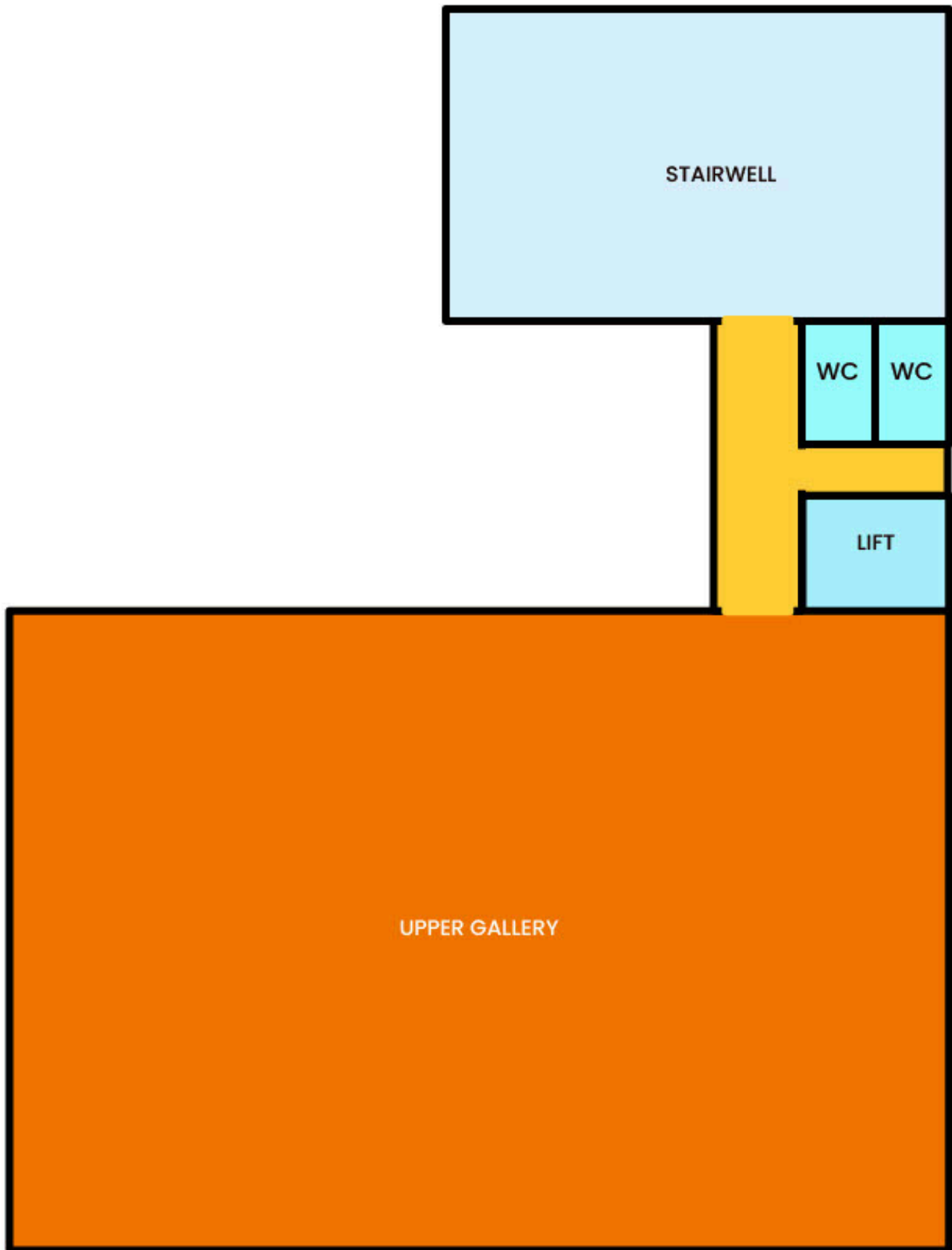
Baby change facilities are located in the accessible toilet. We are a breast-feeding friendly space. We welcome guide dogs and assistance dogs on leads.

# Venue Layout: Ground Floor



GROUND FLOOR

# Venue Layout: Upper Floor



UPPER FLOOR

# Find Us

## Golden Thread Gallery

23–29 Queen Street  
Belfast BT1 6EA

## Public Transport

There are several bus stops within 50m of the venue. The nearest mainline station is Grand Central Station.

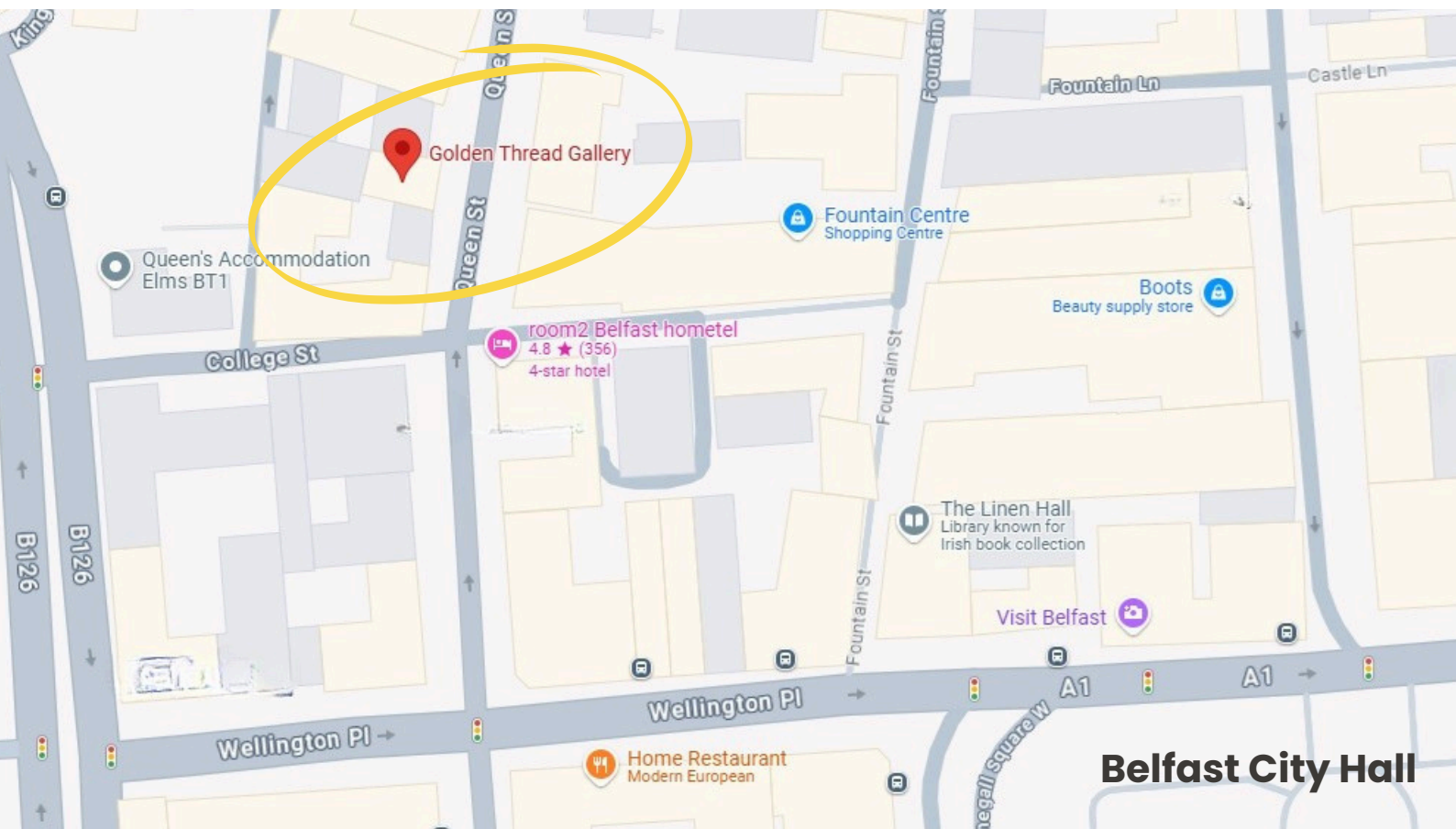
## Parking

The venue does not have its own car park and there is no on-street parking. Blue badge holders can drop off in front of the gallery.

Closest public car parks:

- CastleCourt Shopping Centre. £4.20 2 hours. (7 min. away)
- The Tannery, Francis Street. £3.90 2 hours. (7 min. away)
- Value Car Parks, Grosvenor Road. £2.40 per hour before noon; £3.60 per hour thereafter (9 min. away)

Parking rates as of Jan 2025, subject to change by operators.



GOLDEN  
THREAD  
**GALLERY**

## Contact Us

info@gtgallery.co.uk

02890330920

www.goldenthreadgallery.co.uk

\*Dimensions are approximate, as rooms are irregular. Full measurements available on request.

\*\*Media for use in Projection Room must be supplied in certain formats, details on request.

